



# Swine

Catalog

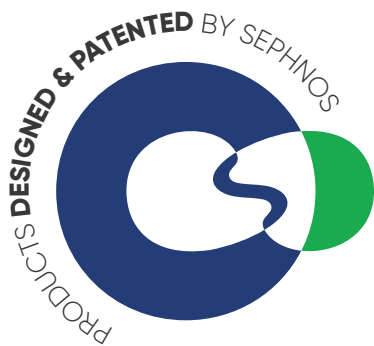


[www.sephnos.com](http://www.sephnos.com) • [sales@sephnos.com](mailto:sales@sephnos.com) • (461) 214 0550



# Index

<b>Titanium Plastic Slats</b>	_____	<b>2</b>
<b>Feeders Line</b>	_____	<b>3</b>
<b>Drinkers Line</b>	_____	<b>4</b>
<b>Pregnancy and Farrowing stalls</b>	_____	<b>5</b>
<b>Lighting and Heating</b>	_____	<b>6</b>





# TITANIUM

## PLASTIC SLATS ▼

European technology maximum resistance

Reinforced plastic floors, with rectangular perforations to be used in maternity stalls and nursery areas.



## NURSERY SLATS ▼



**60x40**

Measurements: **60x40 cm.**

Color: ● ●

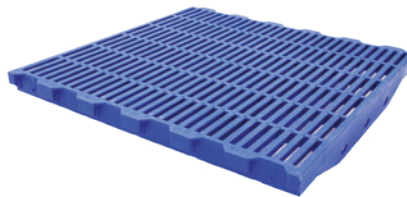
**40x60**



Measurements: **40x60 cm.**

Color: ● ●

**60x60**



Measurements: **60x60 cm.**

Color: ● ●

## FARROWING SLATS ▼

**40x60**



Measurements: **40x60 cm.**

Color: ● ●

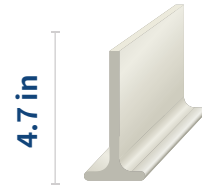
**Blind 40x60**



Measurements: **40x60 cm.**

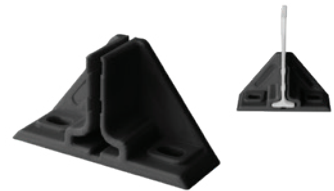
Color: ● ●

### Fiber Glass Platen

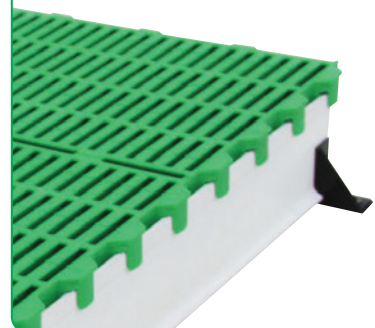


Floor supporting profile manufactured with polymer resins and glass fibers.

### Triangular Plastic Support



Manufactured with highly resistant polypropylene to protect and stabilize fiber glass platen.





# FEEDERS LINE

## FARROWING STAGE ▼

Line of ergonomic feeders with individual spaces for feeding of lactating piglets.



### Turbopig



Color: ●

### Maxigrow

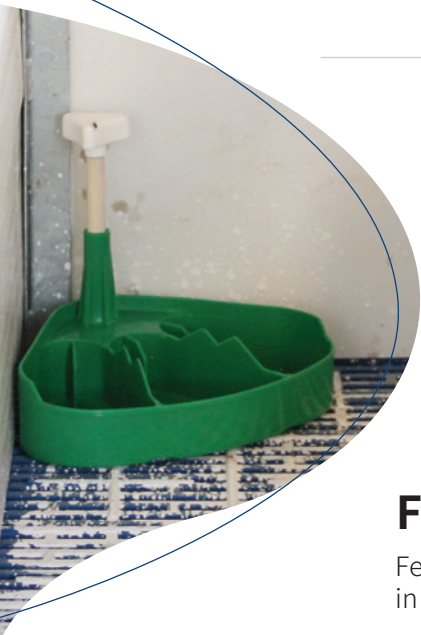


Color: ●



With fastening hook.

## ▼ NURSERY STAGE



### Transit

Capacity 77 lb.

3 use versions.

Composed of lid, extension, deposit, pan, regulation mechanism, anchoring system, and anti-balancing device..

## FINISHING STAGE ▼

Feeders made of plastic for pigs from 44 lb in weight up to the end of the finishing stage.

### Ecofood



66 lb

### Sanifood



66 lb

### Bifood (Wean to finish)



130 lb



# DRINKERS LINE



With fastening hook.

## Maxiflow

Capacity: 4 L

Color: ●

Ergonomic plastic waterers, with triangular design, and two stations for piglets



## Water Saver Plus

2 nipples

Option: Finishing and Nursery.

Color: ●

Plastic drinker for pigs, with ergonomic guards and nipples that allow maximum consumption of water with minimum waste.

## Dispenser nipple

Finishing

Nursery



## Optiflo Dispenser nipple

Sows

Finishing

Nursery





# Stalls

## Pregnancy Stall



Measurements: **0.65 x 2.2 x 1.10 m**

Galvanized metal stall for pregnant sows. Rear and front doors with pole hinges for opening from any side. Low profile in the rear for ease of artificial insemination.

## ▼ Farrowing Stall

Holland-type stall for sows in farrowing stage.

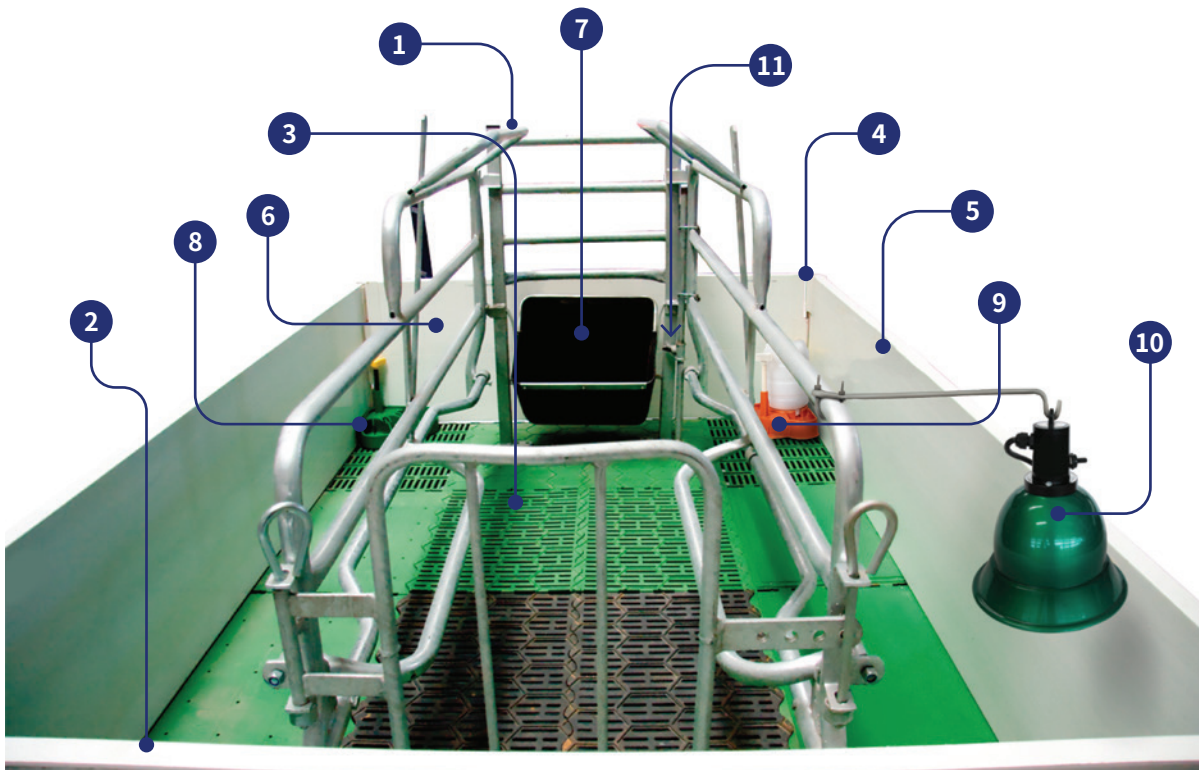
### Benefits

- Comfort for the sow allowing it to freely stand and lie down.
- Facilitates care of sows preventing aggression between them.
- Clean and healthy environment reducing contamination.

### Components

### Quantity

1.- Holland-type farrowing stall	1
2.- First base, 1.60 x 2.40 m.	1
3.- Titanium Farrowing Slats, 40 x 60 cm.	16
4.- Double corner, 50 cm.	4
5.- PVC barriers, 0.5 x 2.40 cm.	2
6.- PVC barriers, 0.4 x 1.60 cm.	2
7.- Farrowing buckets.	1
8.- Maxigrow 3000.	1
9.- Maxiflow 3000.	1
10.- Infrared lamp for farrowing – 1 quartz.	1
11.- Water system for farrowing.	1



# LIGHTING & HEATING ▾

Line of gas brooders and infrared electrical lamps for piglets' care. They maintain thermal comfort reducing stress and disease risk.



**Hilux Reflector**



Color: ○ ● ●

**Hi-Ray 50 Brooder**



5,000 BTU

**Hi-Ray 100 Brooder**



10,000 BTU

**Hi-Ray 15 Brooder**



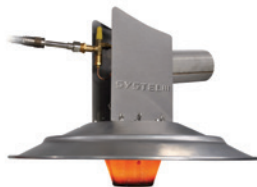
15,000 BTU

**Hi-Ray 40 Brooder**



40,000 BTU

**Sol-Air Brooder**



40,000 BTU

**Sunpower Turboheater**



225,000 BTU

## ▾ INFRARED ELECTRIC LAMP

**Farrowing**

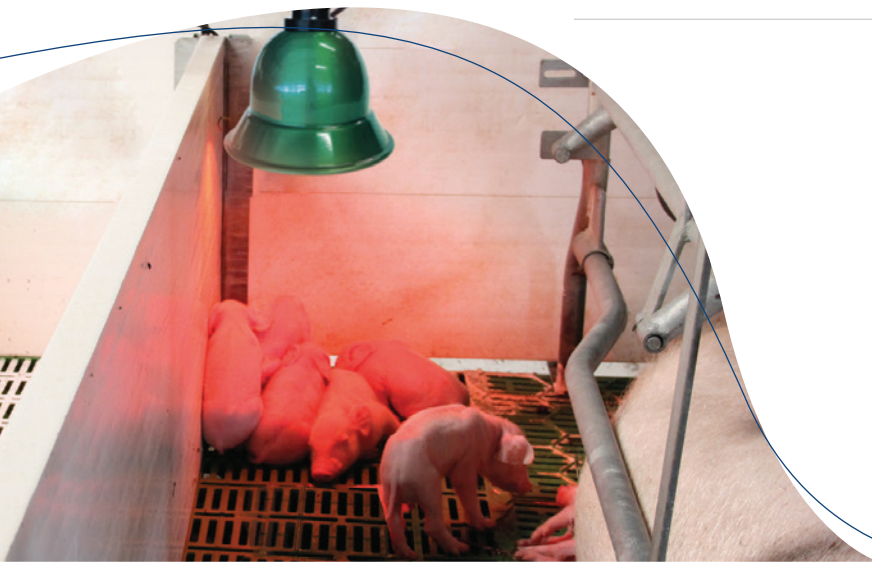


1 quart of 125w, 175w or 250 w.

**Nursery**



2 quart of 125w, 175w, 250w or combinations thereof.





We create and manufacture technologically designed, specialized and innovative products for **animal productivity and welfare.**